

JT5 HORIZONTAL DIRECTIONAL DRILL

OPERATION	U.S.	METRIC
Spindle speed, max	195 rpm	
Spindle torque, max	550 ft·lb	746 N·m
Carriage thrust travel speed	130 fpm	40 m/min
Carriage pullback travel speed	130 fpm	40 m/min
Thrust force	4,100 lb	18.2 kN
Pullback force	5,000 lb	22.2 kN
Bore diameter	2.5 in	63.5 mm
Backream diameter, soil dependent	4.5 in	114 mm
Ground travel speed		
Forward/reverse	1.53 mph	2.46 km/h

POWER

Engine	Kubota® D1105
Fuel	Diesel
Cooling medium	Liquid
Injection	Indirect
Aspiration	Natural
Number of cylinders	3
Displacement	68.6 in³
Bore	3.07 in
Stroke	3.09 in
Manufacturer's gross power rating	24.8 hp
Rated speed	3,000 rpm
Emissions compliance	Tier 4

DIMENSIONS	U.S.	METRIC
Length	120 in	3.1 m
Width	35.9 in	91.2 cm
Height	70 in	1.78 m
Weight	3,690 lb	1674 kg
Entry angle	10-16°	
Angle of approach	18°	
Angle of departure	18°	

DRILLING FLUID SYSTEM (ONBOARD)

Pressure, max	750 psi	51.7 bar
Flow, max	5 gpm	18.9 l/min

FLUID CAPACITIES

Hydraulic reservoir	8 gal	30 L
Fuel tank	13 gal	49 L

POWER PIPE® HD

Length of drill pipe, nominal	59 in	1.5 m
Diameter of drill pipe, tool joint end	1.88 in	47.8 mm
Diameter of drill pipe	1.13 in	28.7 mm
Bend radius, min	70 ft	21.3 m
Weight of drill pipe	16 lb	7.25 kg

BATTERY

SAE reserve capacity rating	85 min
SAE cold crank rating @ 0°F (-18°C)	525 amps

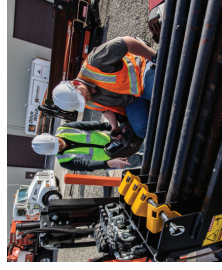
Specifications are general and subject to change without notice. If exact measurements are required, equipment should be weighed and measured. Due to selected options, delivered equipment may not necessarily match that shown.

THE DITCH WITCH® HDD SYSTEM INCLUDES:



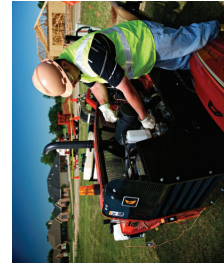
HDD TOOLING

Genuine Ditch Witch drill bits, backreamers, drill pipe, and beacon housings provide superior performance and maximum productivity.



TRAINING

Your Ditch Witch HDD system comes with more than just equipment. It comes with the training to keep your crews confident and efficient, with courses online, in-the-classroom and even on-the-job from certified industry pros.



DEALER SERVICE AND SUPPORT

Get the best new or used equipment, parts, service, financing, or all of the above.



MUD MIXERS

Our fluid-management systems include the FM5X, which is simple, easy to transport and offers multiple configuration options.



JT5

HORIZONTAL DIRECTIONAL DRILL



Ditch Witch®

Ditch Witch®

JT5

Experience built the Ditch Witch® JT5 Horizontal Directional Drill. With input from our customers and their many years of experience installing utilities on tight jobsites, our engineers developed the ideal compact rig with the right amount of thrust and pullback for shallow installations of cable, fiber and water systems up to 150 feet in length (46 m) beneath roads, driveways, sidewalks, sensitive landscaping, and other surface obstacles. The JT5 is a true team effort.

1 Compact and maneuverable JT5 fits through a 36-inch (910-mm) yard gate; at 120 inches (3.1 m) long, it can be set up on the street with minimal traffic disruption.

1

2 Ergonomic operator's station features a stationary seat, automatic fluid shutoff control and easy visibility of the remote display.

2

3 Specially designed drill pipe has aggressive bend radius so you can successfully install utilities around structures.

3

4 Convenient, electrically operated lubrication system helps maximize the life of pipe joints and increase productivity.

4

7 Field-proven rack-and-pinion thrust drive designed for low maintenance and reliability.

7

8 Hood removes easily for access to engine and service points.

8

6 Open-top vise wrenches are designed to center the pipe better every time and provide an excellent view of the tool joint.

6

5 Heavy-duty anchor system keeps the JT5 secure during operation, reduces wear on pipe threads and enables better alignment of pipe during makeup.

5

