



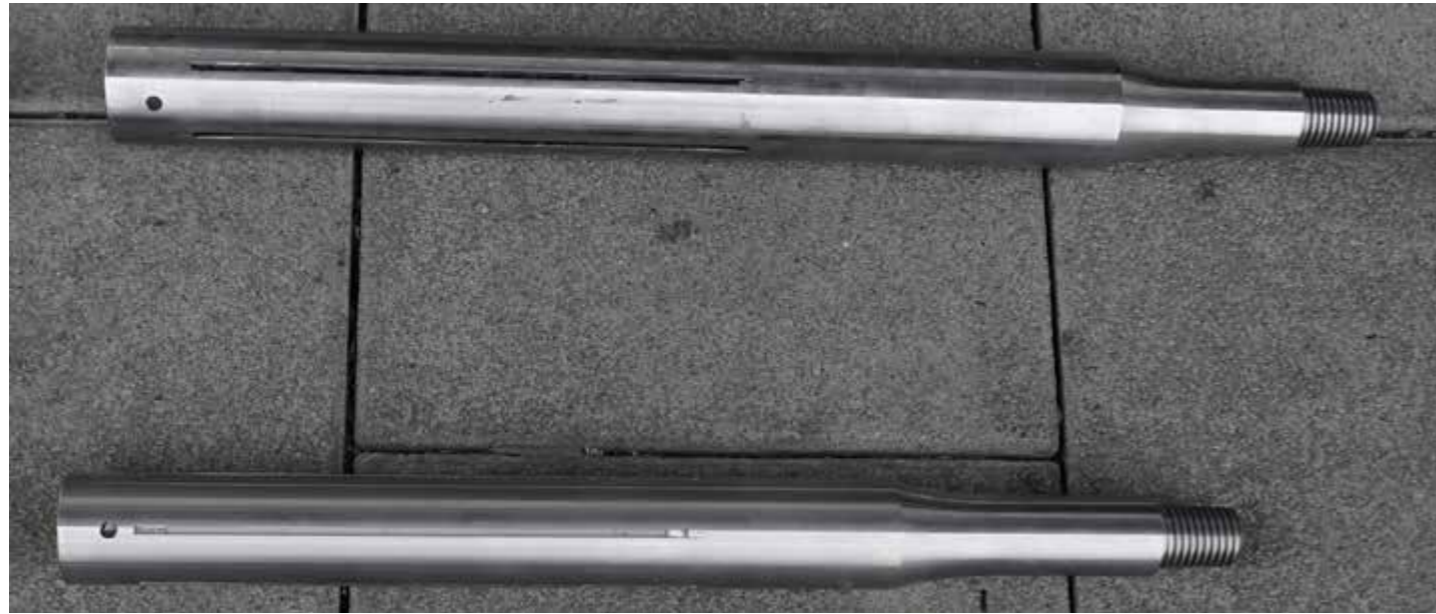
P20

Tools and Accessories

BEACON HOUSING	3
BORE HEADS	4
PUSH RODS	5
ROD BOX	6
DRAWBAR, ROD END STOPS AND ADAPTERS	7
EXPANDING STARS	8
EXPANDERS	9
PULLING HEADS	11
HYDRAULIC POWER PAC	13
CONTROL GROUP	14
CONTROL LEVER	15
DISPLAY BOX	16
SUBSITE TRACKER	17
SUBSITE DISPLAY	18
BEACONS	19
WALLMOUNTING FRAME	20
PIT INSTALLATION FRAME	21

BEACON HOUSING

BORE HEADS



Beacon housing 88B

For Subsite 88B Beacon (up to 9 m depth)
Diameter 45 mm

Artikelnummer: **20-318**

Beacon housing 15T

For Subsite 15T1 (up to 21 m depth)
and 15" DCI Beacons
Diameter 50 mm

Article number: **20-320**



Bore head standard wide version

For 88B Beacon housing
Article number: **20-306**

Bore head long version

For 88B Beacon housing / for soft geology
Article number: **20-306L**

Bore head narrow version

For 88B Beacon housing / for harder geology
Article number: **20-309**

Bore head standard wide version

For 15T Beacon housing
Article number: **20-307**

Bore head long version

For 15T Beacon housing / for soft geology
Article number: **20-307L**

Bore head narrow version

For 15T Beacon housing / for harder geology
Article number: **20-310**

PUSH RODS

ROD BOX



Push rod 0.50 m
Article number: **20-300**

Push rod 0.25 m
Article number: **20-301**

Push rod 1.0 m
Article number: **20-302**

Thread protection cap female
Article number: **20-117**

Thread protection cap male
Article number: **20-118**



Rod box

Suitable for 50 m poles
Stackable
Article number: **20-400**

DRAWBAR ROD END STOPS AND ADAPTERS

EXPANDING STARS

Rod end stop

Article number: **20-303**



Pulling sub tab

Article number: **20-304_Tab**



Pulling sub clevis

For 64 mm Expander
Article number: **20-305**



Thread adapter

Box - Box
Article number: **20-301_box**



Expanding star 75 mm

Article number: **20-332**

Expanding star 95 mm

Article number: **20-333**

Expanding star 105 mm

Article number: **20-334**

Expanding star 25 mm

Article number: **20-335**

Expanding star 145 mm

Article number: **20-336**

EXPANDERS



Expander 64 mm

For pressure pipes with DN 40 and 50 mm
Inside diameter of expander is 56mm, heavy version

Article number: **20-322**

Expander 83 mm

For pressure pipes with DN 63 mm
Inside diameter of expander is 66 mm, heavy version

Article number: **20-324**

Expander 102 mm

For pressure pipes with DN 75 mm or
cable protection pipe 60/72
Inside diameter of expander is 85 mm, heavy version

Article number: **20-326**

Expander 110 mm

For pressure pipes with DN75 mm or
cable protection pipe 60/72
Inside diameter of expander is 96 mm, heavy version

Article number: **20-327**

Expander 121 mm

For pressure pipes with DN 90 mm or cable protection pipe 80/92
Inside diameter of expander is 102 mm, heavy version

Article number: **20-328**

Expander 125 mm

For pressure pipes with DN 110 mm or
cable protection pipe 100/112
Inside diameter of expander is 115 mm, heavy version

Article number: **20-331**

Expander 140 mm

For pressure pipes with DN 110 mm or
cable protection pipe 100/112
Inside diameter of expander is 123 mm, heavy version

Article number: **20-329**

Expander 150 mm

For pressure pipes with DN 125 mm or
cable protection pipe 120/132
Inside diameter of expander is 135 mm, heavy version

Article number: **20-330**

Expander 160 mm

For pressure pipes with DN 140 mm
Inside diameter of expander is 150 mm, heavy version

Article number: **20-337**

Expander 180 mm

Inside diameter of expander is 170 mm, heavy version

Article number: **20-338**

Expander 200 mm

Inside diameter of expander is 190 mm, heavy version

Article number: **20-339**

Expander 254 mm

Inside diameter of expander is 241 mm, heavy version

Article number: **20-340**

Expander 273 mm

Inside diameter of expander is 263 mm, heavy version

Article number: **20-341**

Expander 300 mm

Inside diameter of expander is 285 mm, heavy version

Article number: **20-342**

PULLING HEADS



Pulling head DN20

Clamping range 14-18 mm
Article number: **30-200**

Pulling head DN40

Clamping range 29-36 mm
Article number: **30-204**

Pulling head DN75

Clamping range 59-73 mm
60/72 cable protection pipe
Article number: **30-210**

Pulling head DN110

Clamping range 86-107 mm
100/112 cable protection pipe
Article number: **30-214**

Pulling head DN160

Clamping range 127-148 mm
Article number: **30-220**

Pulling head DN225

Clamping range 178-206 mm
Article number: **30-226**

Pulling head DN25

Clamping range 20-23 mm
Article number: **30-201**

Pulling head DN50

Clamping range 38-44 mm
Article number: **30-206**

Pulling head DN90

Clamping range 69-88 mm
80/92 cable protection pipe
Article number: **30-212**

Pulling head DN125

Clamping range 96-118 mm
100/112 cable protection pipe
Article number: **30-216**

Pulling head DN180

Clamping range 143-170 mm
Article number: **30-222**

Pulling head DN250

Clamping range 195-225 mm
Article number: **30-228**

Pulling head DN32

Clamping range 29-32 mm
Article number: **30-202**

Pulling head DN63

Clamping range 50-55 mm
Article number: **30-208**

Pulling head DN140

Clamping range 110-135 mm
120/132 cable protection pipe
Article number: **30-218**

Pulling head DN200

Clamping range 157-185 mm
Article number: **30-224**

HYDRAULIC POWER PAC

CONTROL GROUP



DOA Super Raptor Hydraulic Power Pac

18 PS B&S Vanguard Gasoline Engine with electric start
30 - 38 l/min, 170 Bar
Stainless steel frame
Weight incl. liquids: 113 Kg
Length: 95 cm
Width: 60 cm
Height: 65 cm

Article number: **SuperRaptor**

Control group

Hydraulic control valve for the MT/P20/P40/P80 rod pushers incl. 12V power supply cable and control lever
Without Power Supply

Article number: **20-720**



CONTROL LEVER

DISPLAY BOX



Control lever 50 cm

Article number: **20-102**

Control lever 80 cm

Article number: **20-103**



Display Box

For the TD Display Screen
IP67 waterproof and impact-resistant box
With battery compartment for 6 pcs. C-cell batteries
incl. antenna connection, antenna mount, receiver
antenna and external 12V power supply cable

Article number: **TD Box**

SUBSITE TRACKER

SUBSITE DISPLAY



TK Recon1 HDD Subsite

Single frequency 29 kHz
Data transmitting: UHF with 8 different channels up to 600 m
Theoretical measuring depth up to max. 21 m (depending on beacon)
Mobile Device compatibility
Drill-to mode
Integrated compass
Anti-glare display
4x C-cell alkaline batteries for operation
IP65 protection against water and dirt
Transport case and device stand

Article number: **TK RECON1**



TD Recon Subsite Display

For tracking system TK Recon1, 2 and 4 with mounting frame and power cable suitable for the TD Box

Article number: **TD Recon**

BEACONS

WALLMOUNTING FRAME

88B Beacon

Frequency: 29 Khz
Theoretical measuring depth up to 9 m
0.1 % Pitch steps
Dimension: 292 x 22 mm
Article number: **88B_PR**



15T1 Subsite Beacon

Frequency: 29 Khz
Theoretical measuring depth up to 21 m
0.1 % Pitch steps
Dimension: 381 x 32 mm
Article number: **15T1**



Wallmounting frame

600 x 225 mm
Article number: **20-158**



Core hole wall mount DN150

For P20 incl. 4 expansion sleeves, expansion flange,
holder with quick clamping device for P20,
clamping wrench and carrying handle
Article number: **20-260**

Core hole wall mount DN200

For P20 incl. 4 expansion sleeves, expansion flange,
Bracket with quick clamping device for
P20 wall mounting frame (HD version)
Article number: **20-261**

PIT INSTALLATION FRAME

Pit installation frame

800 x 300 mm
incl. 2 adjustable support arms and back support plate
1.20 m - 1.75 m bracing length
Article number: **20-159**



Hydraulic pit installation frame

800 x 300 mm
inkl. 2 hydraulische, absteckbare Verspannstützen,
Front- und Rückplatte und Handhydraulikpumpe
Verspannlänge: 1.20 m - 1.75 m
Zylinderhub: 20 cm
Gewicht: 118 Kg
Article number: **20-500**





DWL Baumaschinen AG
Schützenstrasse 6
6234 Triengen

+41 (0)62 775 00 01

office@dwl.ch
dwl.ch